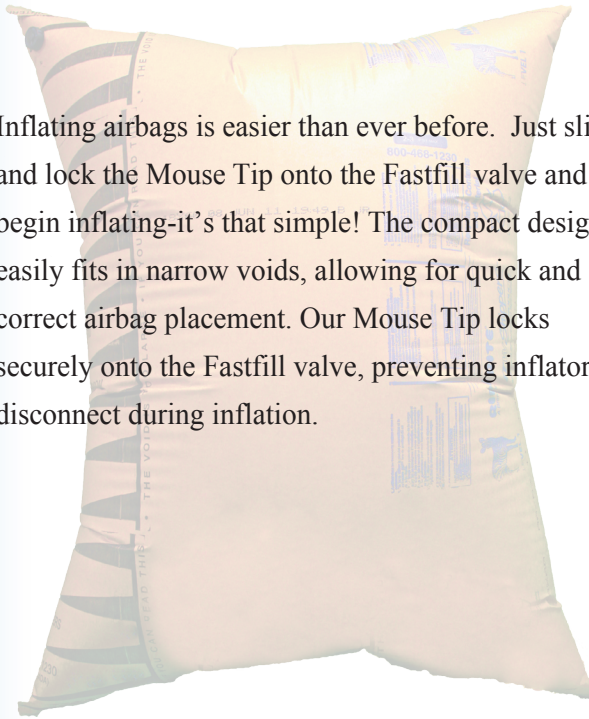


# Mouse Tip Inflator Tool

Inflating airbags is easier than ever before. Just slide and lock the Mouse Tip onto the Fastfill valve and begin inflating—it's that simple! The compact design easily fits in narrow voids, allowing for quick and correct airbag placement. Our Mouse Tip locks securely onto the Fastfill valve, preventing inflator disconnect during inflation.



**Safe.** Positive lock ensures tip will not fall off during inflation

**Easy.** Compact design attaches quickly & easily into narrow voids

**Fast.** Saves time with quick install- inflates bags quickly



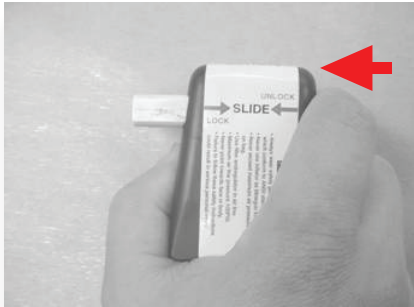
Fastfill valve



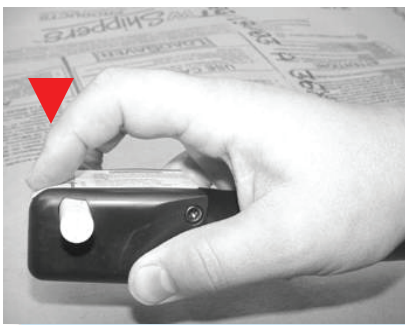
Fastfill inflator  
with Mouse Tip

# MOUSE TIP

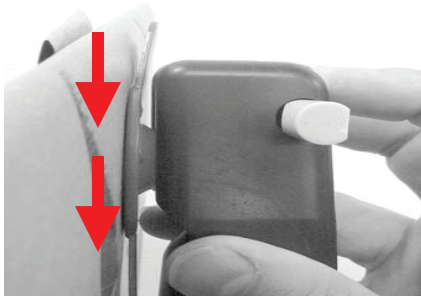
## INSTRUCTIONS



1. To APPLY, push slide pin to the UNLOCK position.



2. Tilt Mouse Tip head downward, completely exposing inflation valve channel.



3. Align Mouse Tip opening with top ridge of Fastfill valve and slide onto valve (completely).



4. Push slide pin to the LOCK position. (Slide pin tension should increase in the LOCK position.)

To REMOVE Mouse Tip...

Push slide pin to the UNLOCK position. Slide to remove from inflation valve .

## SAFETY TIPS

-Read the operation & instructions and follow them carefully.

-Always wear safety glasses when inflating air bag(s).

-Air bags must be dry and free from oil and dirt. Dirty air will clog the air gauge element and will produce an incorrect reading.

-Use a filter and regulator at air source.

-Max air line pressure setting is 100 p.s.i. To receive max air flow, use a 3/8" or 1/2" air hose.

-Never use the inflator as a blowgun for cleaning.

-Use the inflator only with ITW Shippers Products air bags.

-Use only an ITW Shippers combination inflator kit.

-Never fill air bags using a bottled air or gas source.