



XLR8

SERVO-DRIVEN SIDE SEAL HORIZONTAL SHRINK WRAPPER

The XLR8 side seal horizontal shrink wrapper is one of the most versatile, servo-driven packaging machines on the market today. It is capable of wrapping up to 100 packages per minute in clear or print registered film. This continuous motion XLR8 film folding system eliminates the need for multiple forming heads with its adjustable film former. Unlike conventional film inverters, the XLR8 film path ensures equal transfer of grouped products onto the film without skewing the product configuration making it ideal for multipacks and irregular shaped products.

Multi-axis servo-driven operation offers precise electronic control for immediate and accurate sealing action, ensuring strong, consistent seals. The seal opening height is electronically programmed to vary with product height, maximizing output speeds for smaller products. The servo pouch length adjustment enables "on-the-fly" bag length changes without changing the flight spacing.

All adjustments are made from the operator side of the machine and product changeovers can be completed quickly and easily.



The XLR8 uses single wound film which is less costly than centerfolded rolls and increases uptime efficiency. A unique side sealing mechanism ensures strong attractive trim seals using polyolefin, PVC or polyethylene shrink film. The XLR8's cross-seal system has a precision temperature control that maintains accurate heat settings. An independently driven scrap removal system compacts excess film. A side loading film cradle allows easy roll loading and reduces film changeover time.

Located beneath the film forming table, the film requires no additional floor space. Compact in design, the XLR8 is easily integrated into any existing production environment.



Horizontal Sealing System



User-Friendly Operator Controls



Digital Counters and Scales for Fast and Repeatable Product Setup

FEATURES

- Heavy-duty rugged construction for high durability and around-the-clock operation
- Laser cut and CNC machined components for maximum precision and strength
- Powder coat finish that provides a durable scratch resistant surface and prevents corrosion
- Horizontal cross seal
- Allen-Bradley® PanelView 600Plus operator interface with color touchscreen, message display and self-diagnostics
- Digital counters and scales for easy and repeatable product setup
- Guards electrically interlocked
- 6' flighted infeed with safety torque limiter
- Adjustable film forming head
- Servo-driven seal carriage for smooth product transitions
- Servo-driven seal head for consistent pressure and heat
- Servo-driven infeed conveyor
- 8" seal bar opening
- Slide-out side loading film cradle
- Missing product detection
- NEMA 12 main electrical cabinet and controls
- Evenly wound trim removal system compacts film trim for easy disposal
- Relaxed film tension at cross seal
- Central point lubrication simplifies preventive maintenance
- Low film alert warns that a film changeover will soon be necessary

OPTIONS

- Belted infeed
- Seal jaw bridge
- Extended flighted infeed
- Stainless steel construction
- Application specific infeeds
- Print registered film capability
- Pneumatic hole punch system
- Easy open film perforation system

SPECIFICATIONS

Speed

- Output speed: up to 100 packages per minute (based on product specs)
- Output speed: up to 120 linear feet per minute

Product Range

Product Size	Width	Length	Height
Seal Bar (Vertical)	2" - 7.5"	3 1/2" - 60"	2" - 12"
Seal Bar (Horizontal)	2" - 16"	3 1/2" - 60"	1/4" - 7.5"

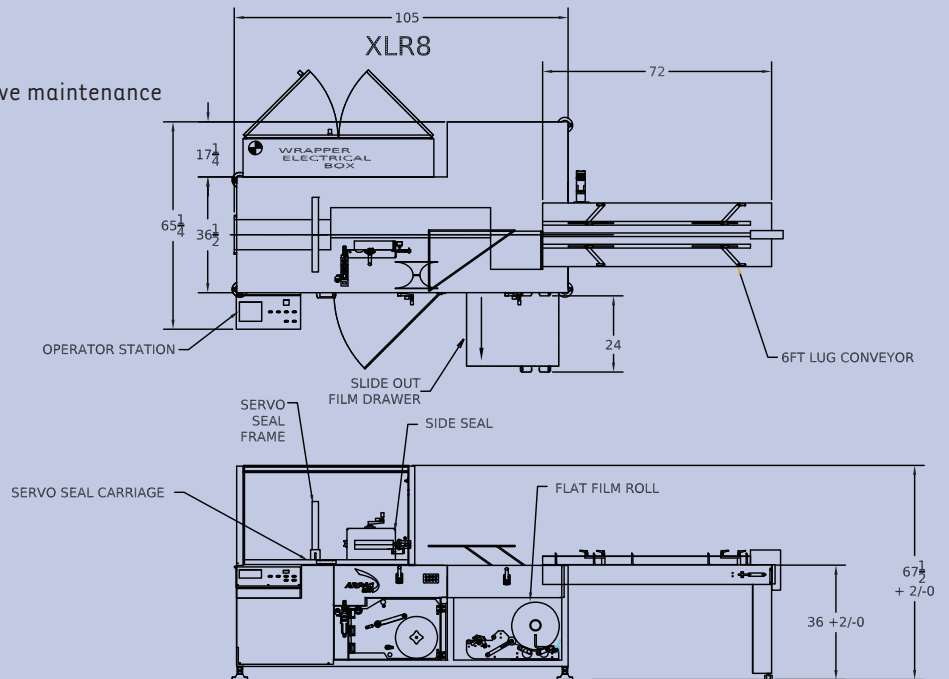
Film

- Max. film width: 39" single-wound
- Max. film roll diameter: 15"

Specifications and product sizes may vary, depending upon the application.
Max. package dimensions cannot occur together.

APPLICATIONS

- Bottles
- Paper products
- Linens
- Mailers
- Food products
- Toys
- Cosmetics
- Pharmaceutical
- Hardware
- Games
- Multipacks
- Software
- Spray cans



PACKAGING

888-922-1622

WWW.IPACK.COM