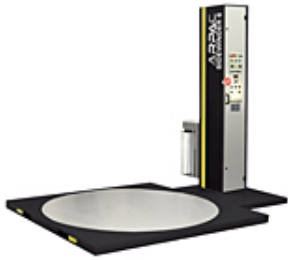


## Item # Sidewinder 6 LP, Low Profile Heavy-Duty Semi-Automatic Stretch Wrapper

List Price QUOTE



### Low Profile Heavy-Duty Semi-Automatic Stretch Wrapper

The SIDEWINDER® 6 is part of a robust line of stretch wrapping equipment designed to maximize stretch film usage while ensuring the very best load unitization. All ARPACSTRETCH™ equipment is constructed with heavy-duty reinforced structural steel finished with Steel-It paint to guarantee years of reliable wrapping. The SIDEWINDER® 6 is manufactured in the USA and sold through our nationwide distributor network.

The SIDEWINDER® 6 is a heavy-duty semi-automatic stretch wrapper with 6,000 lb. capacity. This model is available with a high profile turntable for forklift loading, and low profile turntable for pallet-jack loading.

The operator attaches the film to the load, and presses the start button to begin the wrap sequence. After the load is wrapped, the operator cuts the film. An optional Automatic Film Tear Device (AFTD) tears the film automatically at the end of the wrapping cycle.

The SIDEWINDER® 6 can be customized to suit your material handling requirements with extended towers for taller loads, extended bases for larger loads, and split frames for odd-sized larger loads. The SIDEWINDER® 6 is also available with a 30" film carriage and dual turntables for greater throughput, cold and freezer packs for reliable operation in extremely harsh temperatures, and a pneumatic roping device for extra load support.

## FEATURES

- Welded heavy-duty reinforced structural steel construction for around-the-clock operation
- Steel-It paint provides a durable scratch resistant surface and prevents corrosion
- Forklift portable
- 4 point caster support for HP turntable
- 8 pairs - Delrin caster support for LP turntable
- Turntable direct drive: 3/4 HP, DC motor with ANSI 60 chains
- Allen-Bradley® Micrologix PLC
- User-friendly operator controls with dual LED wrap counters
- Built in self-diagnostics
- Electronically controlled film tension adjustment
- Top over-wrap control feature
- Cycle pause and turntable jog control
- Carriage pause control (banding)
- Positive home position alignment
- 3 wrap pattern selections
- Photo electric load height sensor that detects most dark colored loads
- Adjustable top and bottom wrap counters (0-7)
- Corner compensation
- Anti-static rollers
- UL approved components
- External fus
- Variable carriage speed (0-21 FP)
- EZ-Load FLM SAVR: Powered Pre-stretch 150%-300% (200% standard)
- Film delivery: 1/2 HP, 90 VDC mot
- Carriage drive: 1/3 HP, 90 VDC mot
- Dual ANSI chain lift dri